



# COMPANY PROFILE



PT. ARKELINDO BARA SEJAHTERA

website : [www.arkbase.co.id](http://www.arkbase.co.id)  [Arkbase.Coco](https://www.youtube.com/Arkbase.Coco)  [Arkbase.Coco](https://www.facebook.com/Arkbase.Coco)  [Arkbase.Coco](https://www.instagram.com/Arkbase.Coco)



# ABOUT US

**PT. Arkelindo Bara Sejahtera (ARKBASE)** was established in January 2018. The potential for abundant raw materials, the availability of labor and the market demand that is significantly large to meet the needs of premium coconut charcoal are the basis for the establishment of ARKBASE. Our products widely used for Shisha and BBQ to serve shisha café, restaurant, hotel, resort and household consumption both for local and international (export) market.

## BACKGROUND

Indonesia is the largest coconut producer in the world, with a plant area of around 3.88 million ha (97% are smallholding plantation), due to the nature of coconut which can grow in almost all parts of Indonesia.

Coconut processing produces many products, including: coconut charcoal, coco-chemical, coco fiber, coconut cooking oil, desiccated coconut, nata de coco, activated charcoal, biomass, coco peat and so on





# VISION & MISSION

## VISION

Become a world-class premium quality coconut shell charcoal briquette manufacturer.

## MISSION

Creating premium quality products through continuous innovation.

Maintain product quality through high standard quality control and selection of quality raw materials

Meet global demand in a timely manner through process management and reliable workforce availability

Participate in improving the regional economy through empowering the surrounding community, both through capacity building as well as the absorption of quality local raw materials





# COMPANY VALUE



- **PREMIUM QUALITY**

Creating premium product with high quality control standard starting from raw material process to finished goods

- **INNOVATION**

Keep innovating to align with market and industry trend

- **SOCIAL EMPOWERMENT**

Actively participate in improving regional economy through empowering local society

- **ECO-FRIENDLY**

Actively participate in keeping both environmental and human safe, no trees were cut to produce our product.

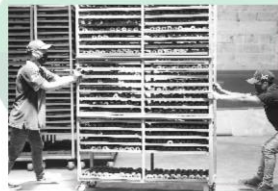




# OUR PRODUCTION & PEOPLES

ARKBASE stands on an area of 5,000 m<sup>2</sup> and is located on the South Java Line that connects Central Java with West Java and Jakarta. Currently, our total production capacity is 400 Tons per month and still growing.

Our team of experts have in-depth knowledge and long experiences in the coconut charcoal industry more than 10 years.





# OUR PRODUCTION PROCESS

ARKBASE is committed to continuously using natural raw materials, namely coconut shell charcoal specifically made with natural combustion systems, this will guarantee the quality of coconut shell charcoal as a raw material for making coconut charcoal briquettes



1. Preparation
2. Shifting
3. Screening
4. Crushing
5. Mixing & Blending
6. Molding
7. Drying
8. QA/QC
9. Packing



# OUR PRODUCT

We produce premium coconut briquettes for both Shisha/hookah and BBQ use.

## BBQ Coconut Charcoal Briquettes

### Specification

Parameter	Unit	Result Basis		Method
		Wet	Dry	
Moisture Content	%	5 - 7	-	ASTM D.1762.84 Reapproved 2013
Ash Content	%	12-13	14-15	ASTM D.1762.84 Reapproved 2013
Volatile Matter	%	21-22	23-34	ASTM D.1762.84 Reapproved 2013
Fixed Carbon	%	59-62	63-65	By Different
Calories	KCal/Kg	>6000		ASTM D.1762.84
Lightning Time	Min	5-10		-
Burning Duration	Min	240		-

ASTM is an International standard test method of chemical standard analysis for charcoal

We serve OEM premium coconut charcoal briquettes for BBQ in various shapes and sizes as follows

- CBBQ = 30 x 40 x 25
- HBBQ = 50 x 100

## Shisha/ Hookah Coconut Charcoal Briquettes

### Specification

Parameter	Unit	Result	Method
Moisture Content	%	< 5	ASTM D.1762.84
Ash Content	%	< 2	ASTM D.1762.84
Volatile Matter	%	< 15	ASTM D.1762.84
Fixed Carbon	%	77.30	By Different
Calories	KCal/Kg	>7000	ASTM D.1762.84
Lightning Time	Min	5-10	-
Burning Duration	Min	120	-

### ARKBASE Briquette Quality Standards

We serve OEM premium coconut charcoal briquettes for shisha in various shapes and sizes as follows

#### Cube

- C15 = 15 x 25 x 25
- C22 = 22 x 22 x 22
- C25 = 25 x 25 x 25
- C26 = 26 x 26 x 26

#### Hexagonal

- H23 = 23 x 48
- H21 = 21 x 48
- H20A = 20 x 50
- H20E = 20 x 48

#### Kaloud

- K3 = 50 x 27
- K4 = 48 x 22

#### Finger Stick

- S20 = 20 x 40



Or if you do have other size in mind, feel free to **Contact Us**



# PACKAGING & SHIPMENT

## SHIPMENT

**20 ft Container**  
- 18 Ton

**40 ft Container**  
- 25 Ton



## PACKAGING



Your **BRAND/DESIGN**

**Small BOX**  
- 500 gr, 1 Kg

**Master Box**  
- 10 Kg

\*Other BOX sizes  
available too

**Contact Us** for further detail about the Packaging  
and Shipping.







# OUR COMMITMENT

To carry out a proven production process with reliable workforce in order to produce premium quality briquettes



100% from high quality handpicked coconut shell charcoal.



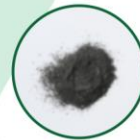
Premium Quality.



Different shapes and sizes available.



Environmentally friendly. No trees were cut!



Low ash content.



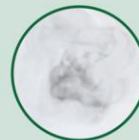
High heat and long burning duration up to 120 mins.



0% chemical additive added.



Strong, doesn't crack easily.



No smoke or sparks.



# OUR CUSTOMER

We believe trust, commitment, and mutual partnership are key points to win the confidence from our customers. Currently we serve mostly for export market and in the process establishing local market. For export market we already served the following countries:

RUSSIA, UKRAINE,  
USA, BRAZIL, PARAGUAY,  
URUGUAY, GERMANY,  
UNITED KINGDOM,  
NETHERLANDS,  
BELGIUM, FRANCE,  
SPAIN, ITALY,  
FINLAND, MIDDLE EAST,  
AND MORE





# CONTACT US!

## HEAD OFFICE

Horizon Broadway  
Blok M6 No. 6  
The Icon BSD City  
Tangerang Selatan – Banten  
15345, Indonesia.

## PHONE :

+62 811 1201 6444  
sales@arkbase.co.id  
website : [www.arkbase.co.id](http://www.arkbase.co.id)

## FACTORY

Jl. Raya Cihaurbeuti-Panumbangan,  
Dusun Bojong, RT.007 RW.012,  
Desa Padamulya, Kec.Cihaurbeuti,  
Ciamis, Jawa Barat 46262,  
Indonesia.

## PHONE :

+62 265 7570 531